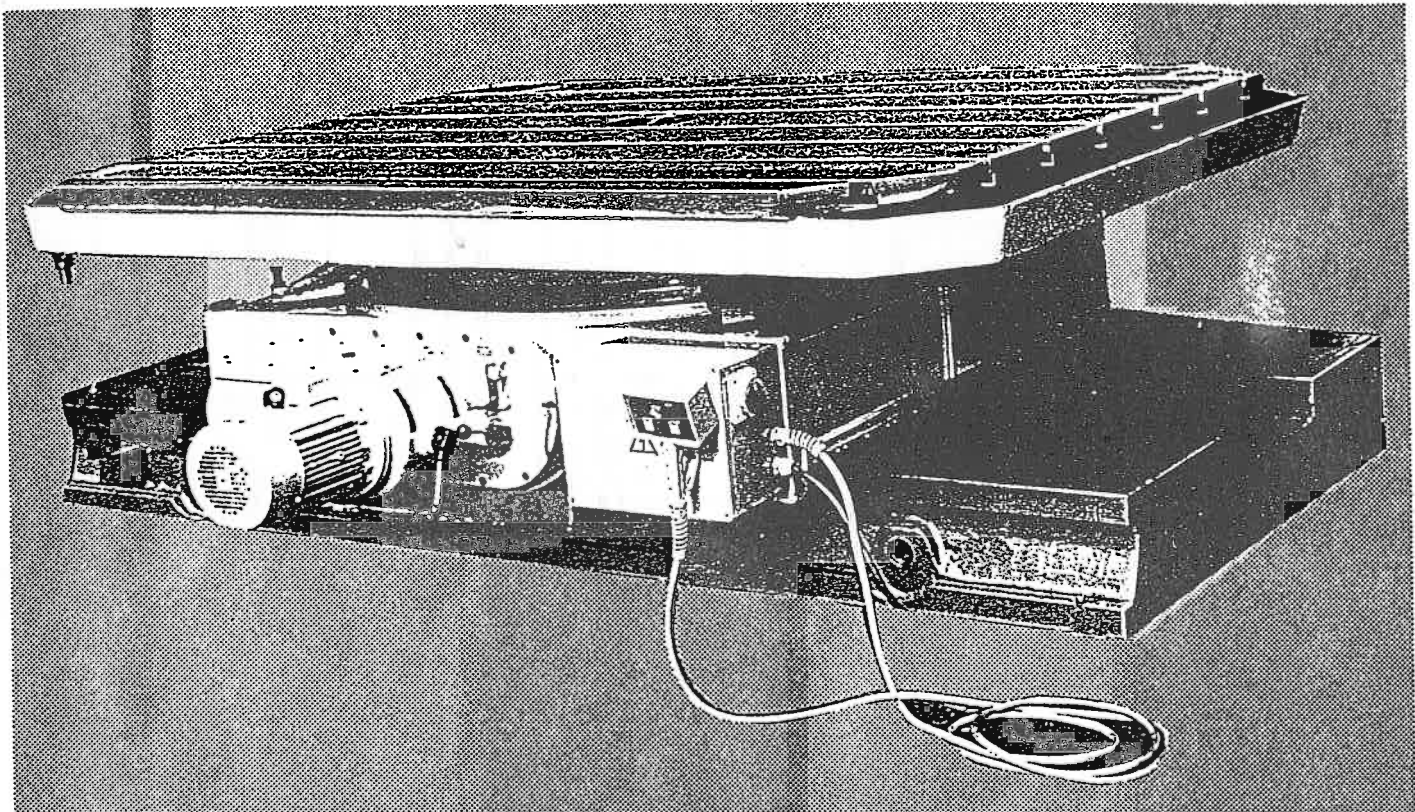




Technologic accessory

E 25 A

Rotary table

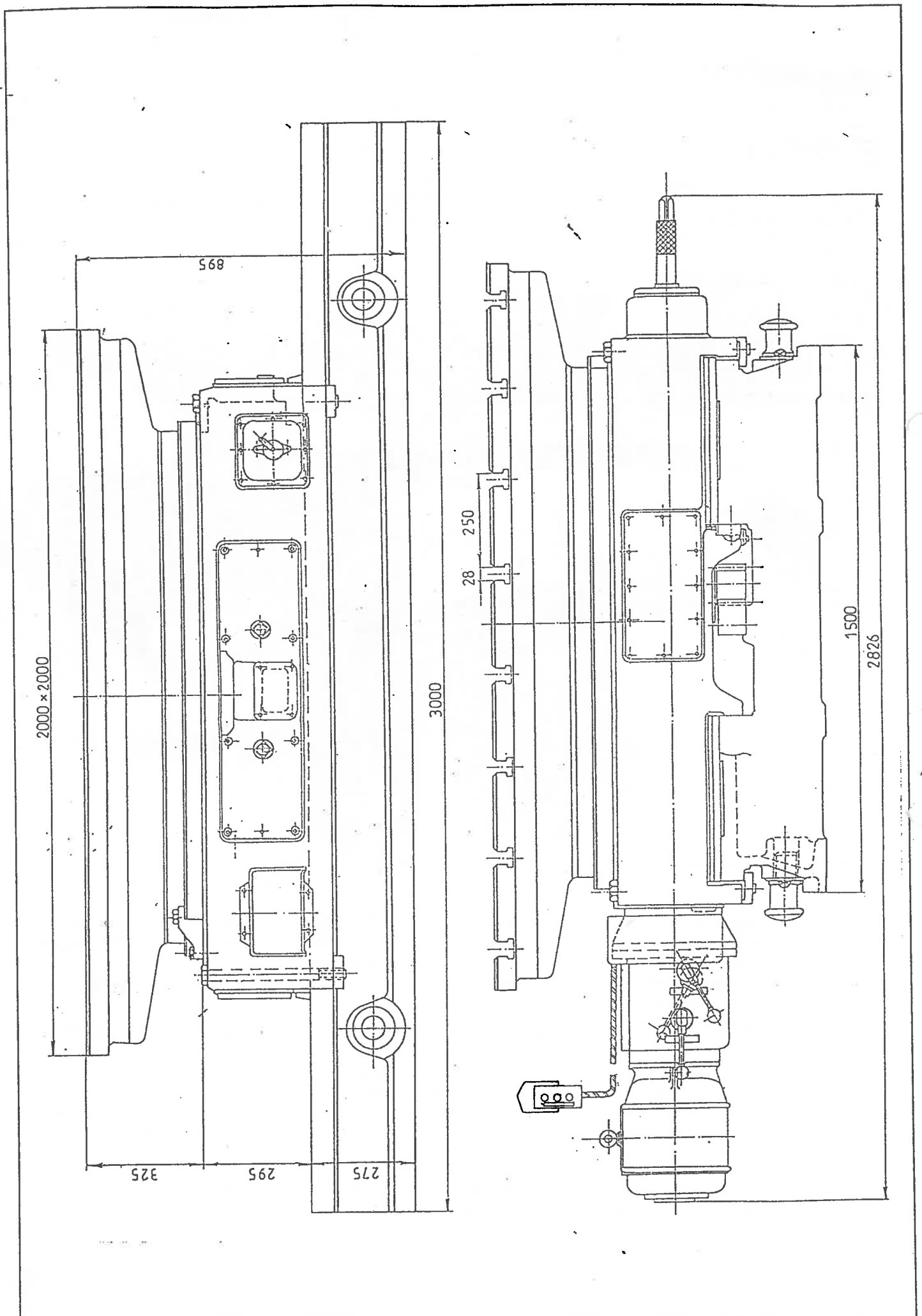


Rotary table E 25 A

Basic characteristic

- The rotary table is intended for use at the floor type of horizontal boring and milling machines to increase their working range and to facilitate setting the workpieces in the machine zone.
- The table is fixed on floor plates of the boring machine, as a rule coaxially with the spindle.
- The precision circular slideways and centric bearing of the table plate enables circular milling operation to be carried out.
- The workpiece is clamped on the table plate which can be swivelled to any angular position.
- The rotary table is provided with a low, well rimmed bed on which slides saddle with the entire feed mechanism and drive box for feed changing.
- Table plate, which swivels on the saddle, is provided with parallel slots for fastening of a workpiece by screw bolts.
- Longitudinal as well as rotary motion is ensured by one asynchronous motor which is mounted on the drive box.
- Longitudinal as well as rotary motion is ensured by one asynchronous motor which is mounted on the drive box. Speeds of both motions can be changed in three ranges. Both motions are also provided with rapid traverses.
- All table movements are controlled from portable panel.

E 25 A - main dimensions



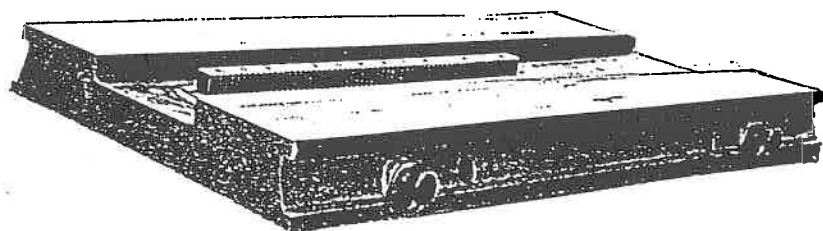
Technical datas

Parameter	Unit	Value
Table working area	mm	2000 x 2000
Table working area	mm	2000 x 2500
Length of bed	mm	3000
Width of ways on bed	mm	1400
Height of table	mm	895
Width of table	mm	2826
Travel on bed	mm	1200
Longitudinal feed - step 1	mm/min	2.8
dtto - step 2	mm/min	8.0
dtto - step 3	mm/min	22.4
Rotary feed measured on diameter 1450 mm - step 1	mm/min	3.8
dtto - step 2	mm/min	10.4
dtto - step 3	mm/min	30.5
Longitudinal rapid traverse	mm/min	1265
Rotary rapid traverse measured on diameter 1450 mm	mm/min	1655
Feed motor	kW	4
Speed of feed motor	r.p.m.	1420
Maximum loading capacity	kg	25000
Weight of table	kg	8200

Description of standard modification

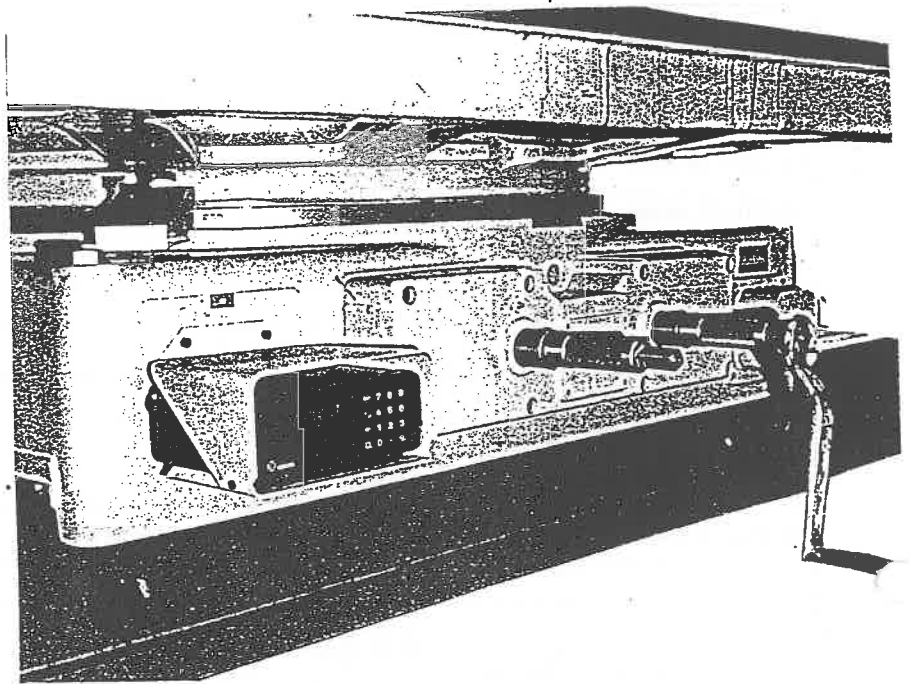
Bed

- Four guideways grey iron casting
- Sliding lubricated guideways
- Hardened guideways - 180-220 HB .
- Rack for movement of saddle
- Lubrication of all guideways by manually operated distributor, oil is taken from worm gearbox



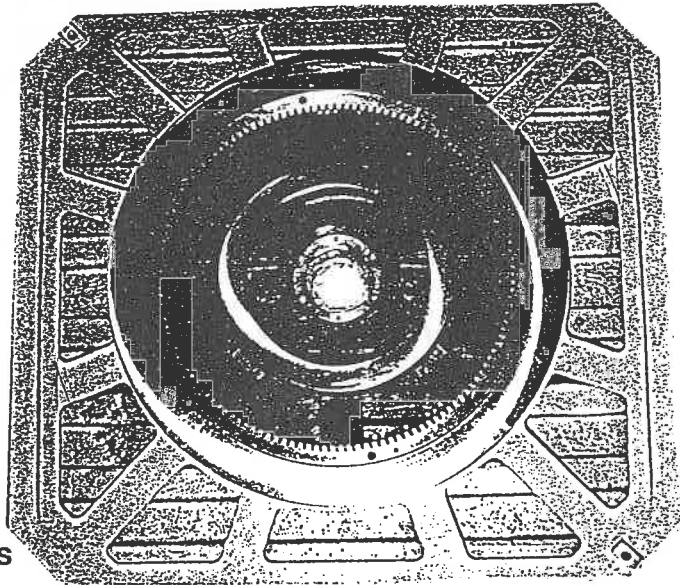
Saddle

- Grey iron casting, rotational
- Mechanical fastening of saddle in set up position by screw bolts



Clamping plate

- Grey iron casting
- Setting of any angle by crank or by mechanical drive. The position red out at display
- Mechanical fastening of plate in adjusted position by screw bolts
- One drive motor either for rotational or longitudinal motion of plate or movement of saddle



Standard accessories

- Electrical outfit of table including the angle measuring system with ROD 250 rotary encoder and VRZ 460 display from Heidenhain
- Set of operating tools
- Set of spare parts

Optionals

- Angular measuring system with ROD 700 rotary encoder and ND 261 display from Heidenhain
- Linear measuring system with LB 326 linear encoder and ND 221 display from Heidenhain
- Telescopic bed cover



ŠKODA MACHINE TOOL
DÖRRIES SCHARMANN GROUP
s.r.o.

Tylova 57, POB 80, 303 80 Plzeň,
Česká republika

Tel.: (+4219) 727 4382
722 7594
Fax: (+4219) 722 1019
722 7594